

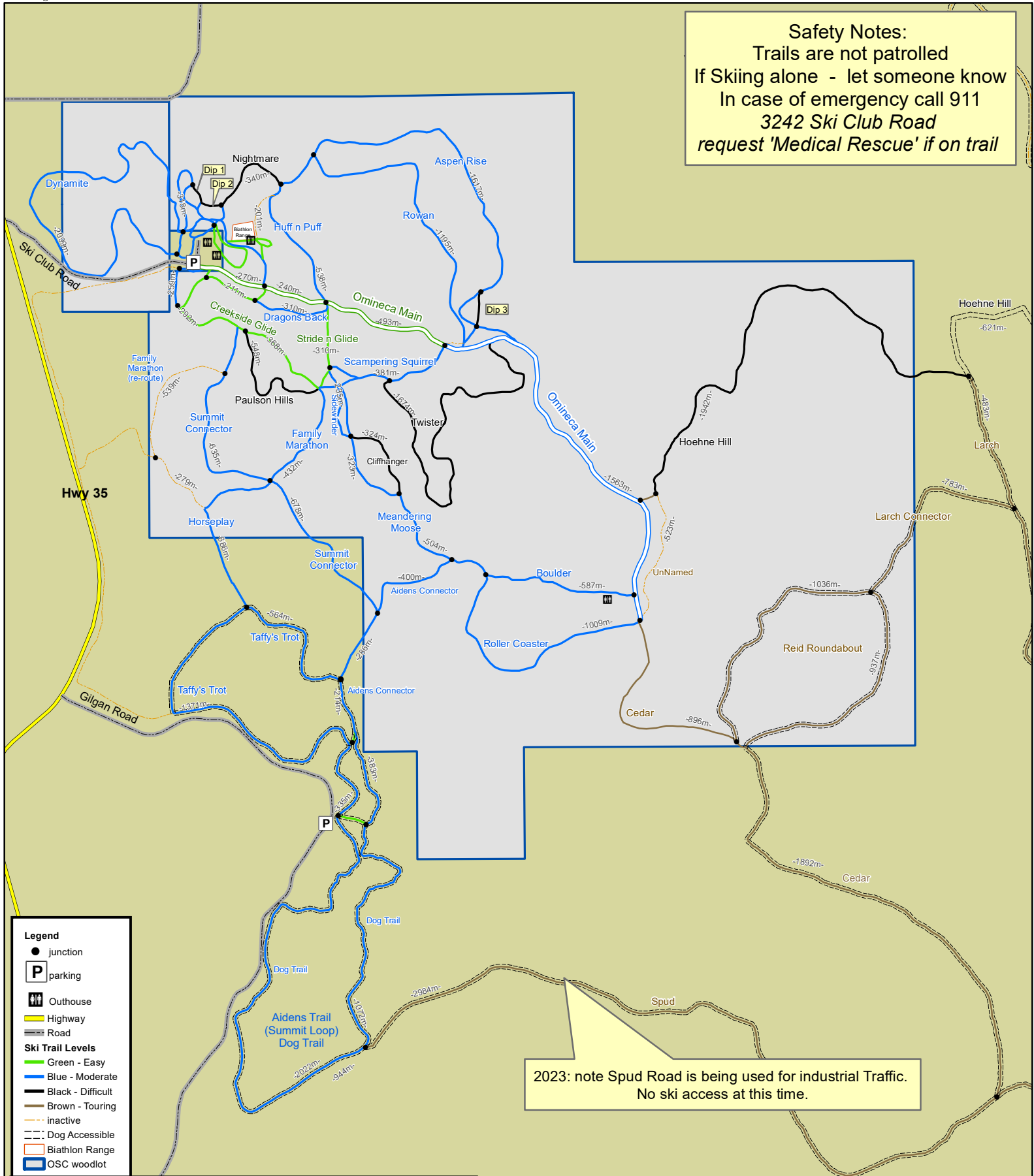


Map Scale  
1:18,500

# Omineca Ski Club Trails

Updated: Jan 2023

**Safety Notes:**  
Trails are not patrolled  
If Skiing alone - let someone know  
In case of emergency call 911  
3242 Ski Club Road  
request 'Medical Rescue' if on trail



**Legend**

- junction
- P parking
- 🚻 Outhouse
- 🛣️ Highway
- 🛞 Road
- Ski Trail Levels**
- 🟢 Green - Easy
- 🟡 Blue - Moderate
- ⚫ Black - Difficult
- 🟤 Brown - Touring
- ⚪ inactive
- 🐕 Dog Accessible
- 🏠 Biathlon Range
- 🌲 OSC woodlot

2023: note Spud Road is being used for industrial Traffic.  
No ski access at this time.

Note: "Touring" refers to inactive logging roads that have been groomed. Difficulty level is similar to Blue - intermediate as they are not technically challenging but are longer in length and skiers need to be prepared for a lengthier ski.